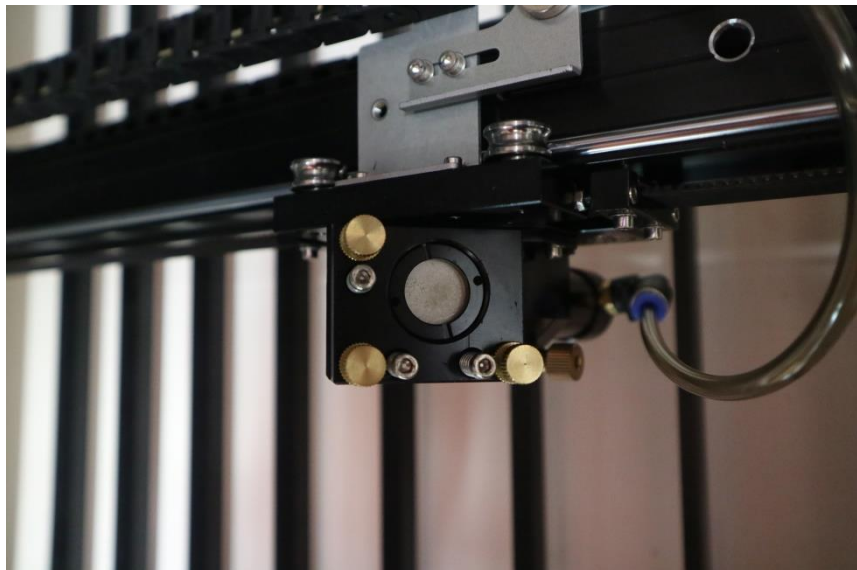
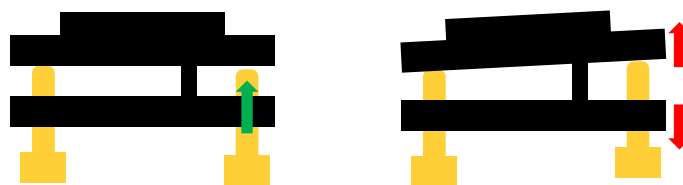


## ・調整ネジの動き方

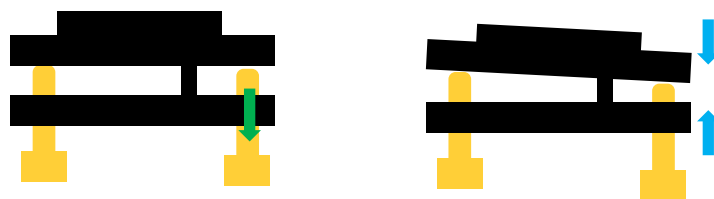


間隔を広げたい場合

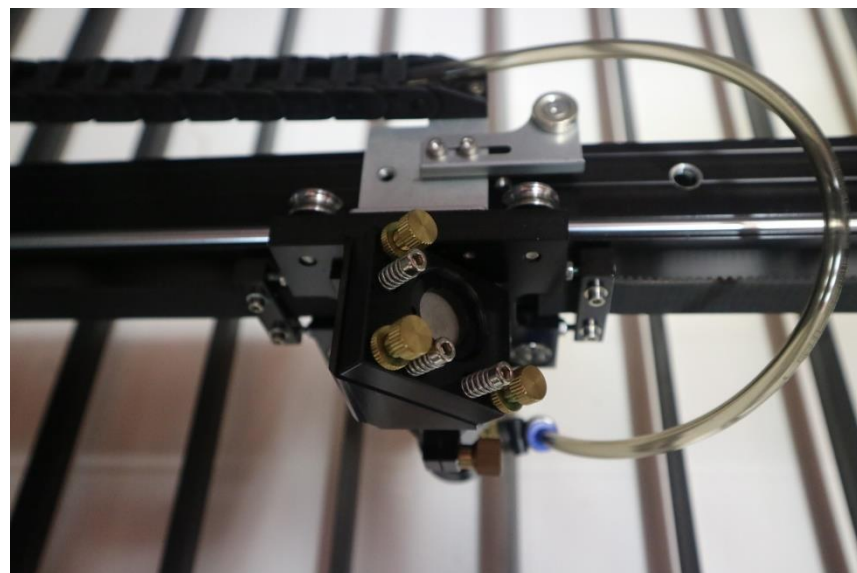


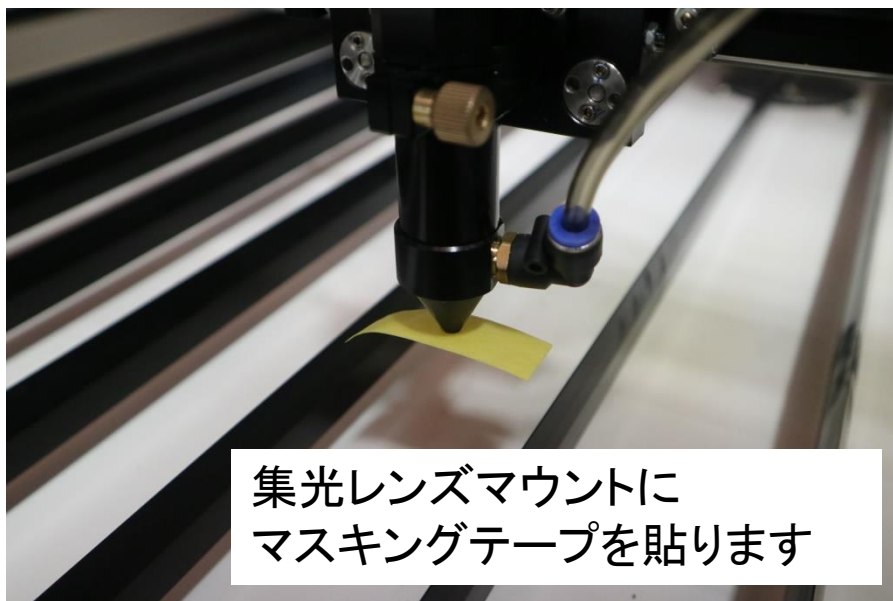
調整ネジを**時計回り**に回すことで間隔が広がりミラーが傾く

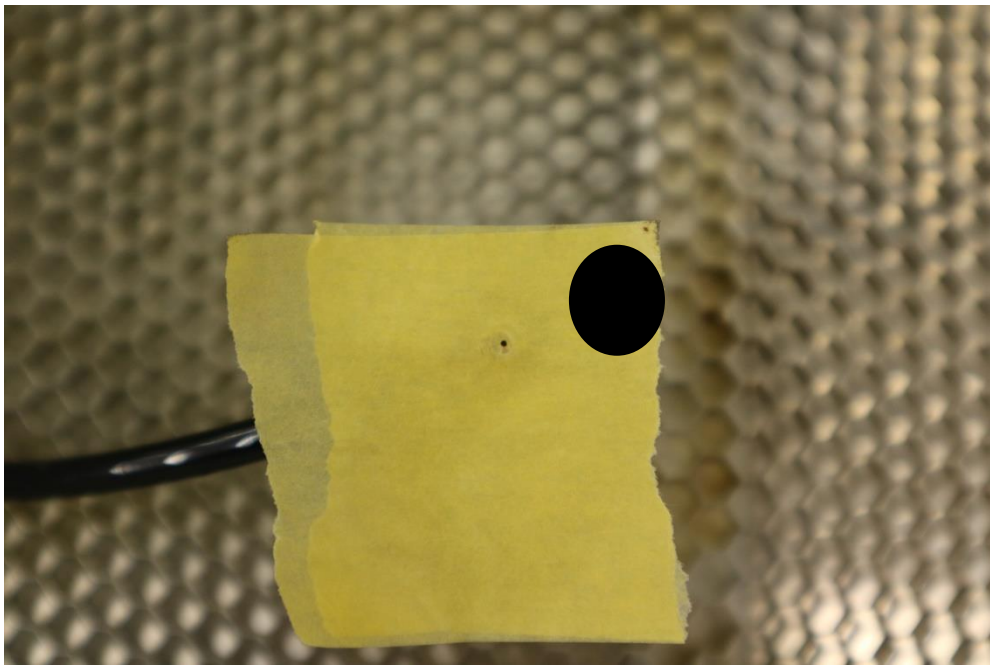
間隔を狭めたい場合



調整ネジを**反時計回り**に回すことで間隔が狭まりミラーが傾く



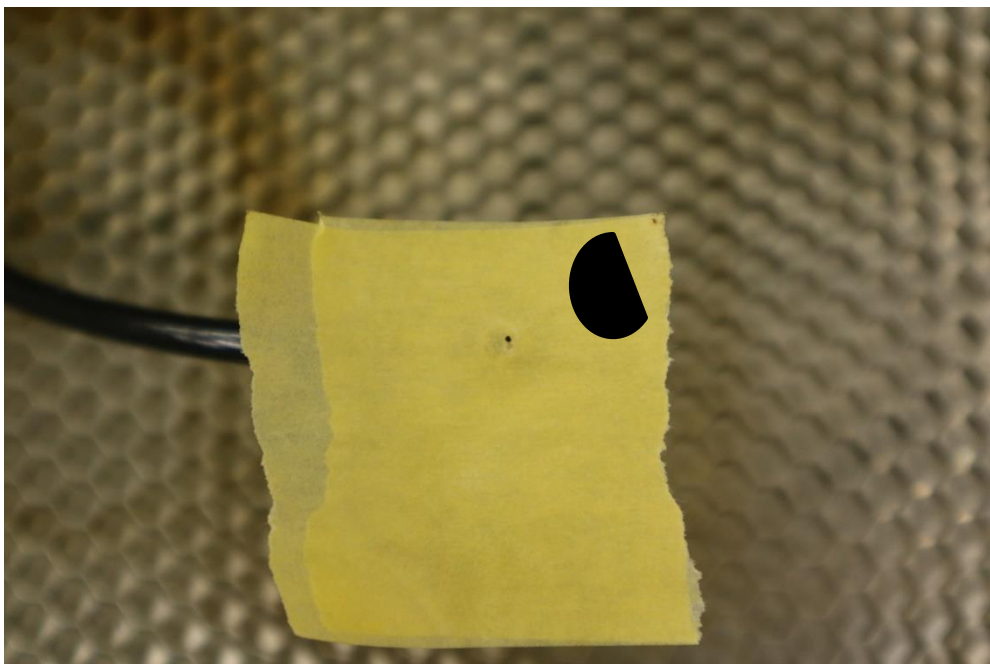





中心付近で焦げ跡が丸くなるまで調整をお願い致します。

照射口の端の方によってしまっていたり、照射口にぶつかって三日月になっていたたりする場合は円の中心付近に焦げ跡がない可能性が高いため再調整をお願い致します。


OK



NG

A photograph showing a laser tube assembly. The tube is black and runs horizontally across the frame. Below it are several parallel metal rods. A black cable is connected to the right end of the tube. A text box is overlaid on the upper left portion of the image.

レーザー管から最も離れた加工エリア右下でも確認します。

A close-up photograph of a red Loctite bottle with a white applicator tip. The bottle is being used to apply a substance to a mechanical component. The component has several brass-colored screws and a blue tube. The Loctite logo is visible on the bottle.

ネジロック剤を塗ることで  
緩み防止になります